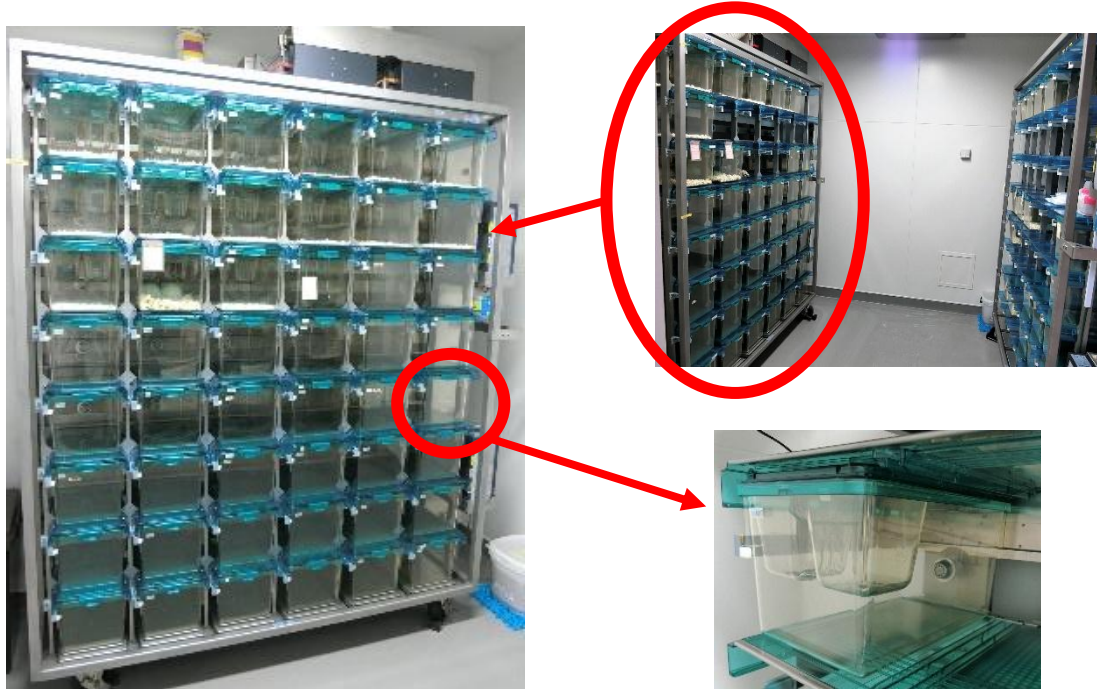


◆ Mouse · Rat Breeding

In total there are 240 isolation-type breeding cages distributed into three rooms: breeding room 1, breeding room 2, and a quarantine breeding room depending on the specific purposes and nuclide use.



High performance isolation type breeding system

◆ Cell Culture

The facility provides an environment favorable to cell culture where cell and animal cell transplantation modeling experiments can be performed in a specific pathogen free environment (SPF).



CO2 incubator



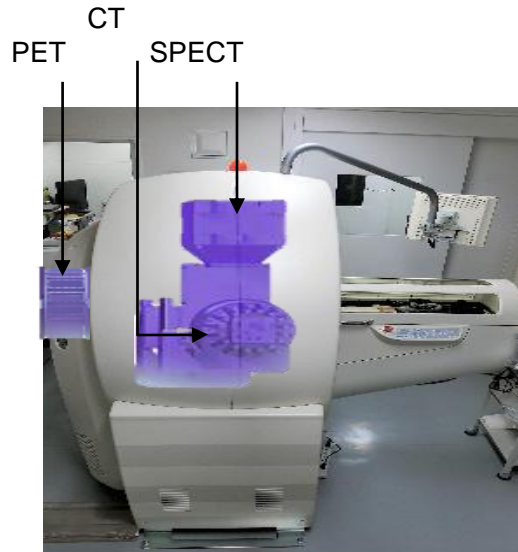
Biosafety cabinet



Cell measurement and
Culture observation device

◆ Imaging

In order to meet specific research goals, the facility is equipped with a small animal PET/SPECT/CT, high sensitivity (preclinical in vivo) optical imaging system and an automatic radiography (ARG) device.



Small animal
PET/SPECT/CT

◆ Cells • Protein • Automated Blood Cell Analysis

Equipped with cell, protein, and hematocyte measuring equipment allowing highly accurate measurement. Availing innovative drug development support such as efficacy, and side effect evaluation and discovery search for optimal dosage.



Fully-automated high-speed cell
sorter SH800S



High-performance
chemiluminescence
imaging system WSE-6100



Automated veterinary
hematology analyzer
MEK-6550

◆ Histopathological analysis

The facility is the equipped with histopathological analysis devices.



Paraffin fixation



Paraffin embedding



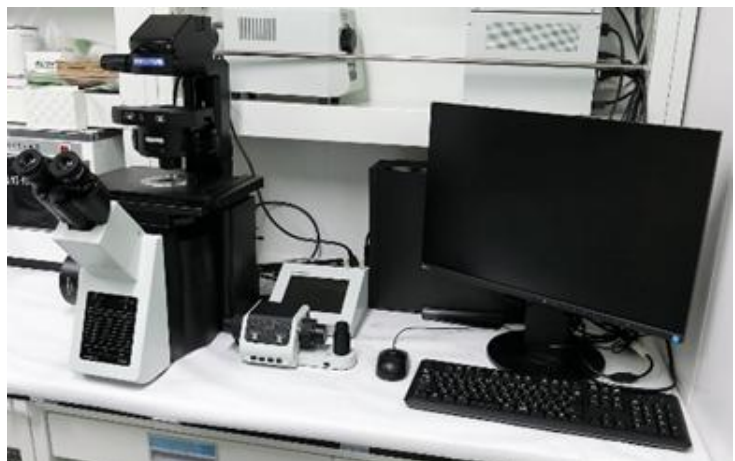
Rotary microtome



Cryostat



Autostainer &
Automated glass coverslipper



histopathological image-analysis system