

Fukushima Medical University

# Fukushima Global Medical Science Center

## Basic Concept



## Introduction

The Great East Japan Earthquake on 11 March 2011, and subsequent Tokyo Electric Power Company's Fukushima Daiichi nuclear power station accidents have forced more than 160,000 people in Fukushima to evacuate and live with anxiety about their future. What has made the situation more severe is environmental contamination with radioactive substances and harmful rumors. They have negatively impacted prefectural industries and brought significant damage on people's sense of safety and security.

Fukushima Medical University has been providing medical care for disaster victims and serving as a secondary radiation emergency medical care facility. We are also a core prefectural medical institution and the base for the Fukushima Health Management Survey.

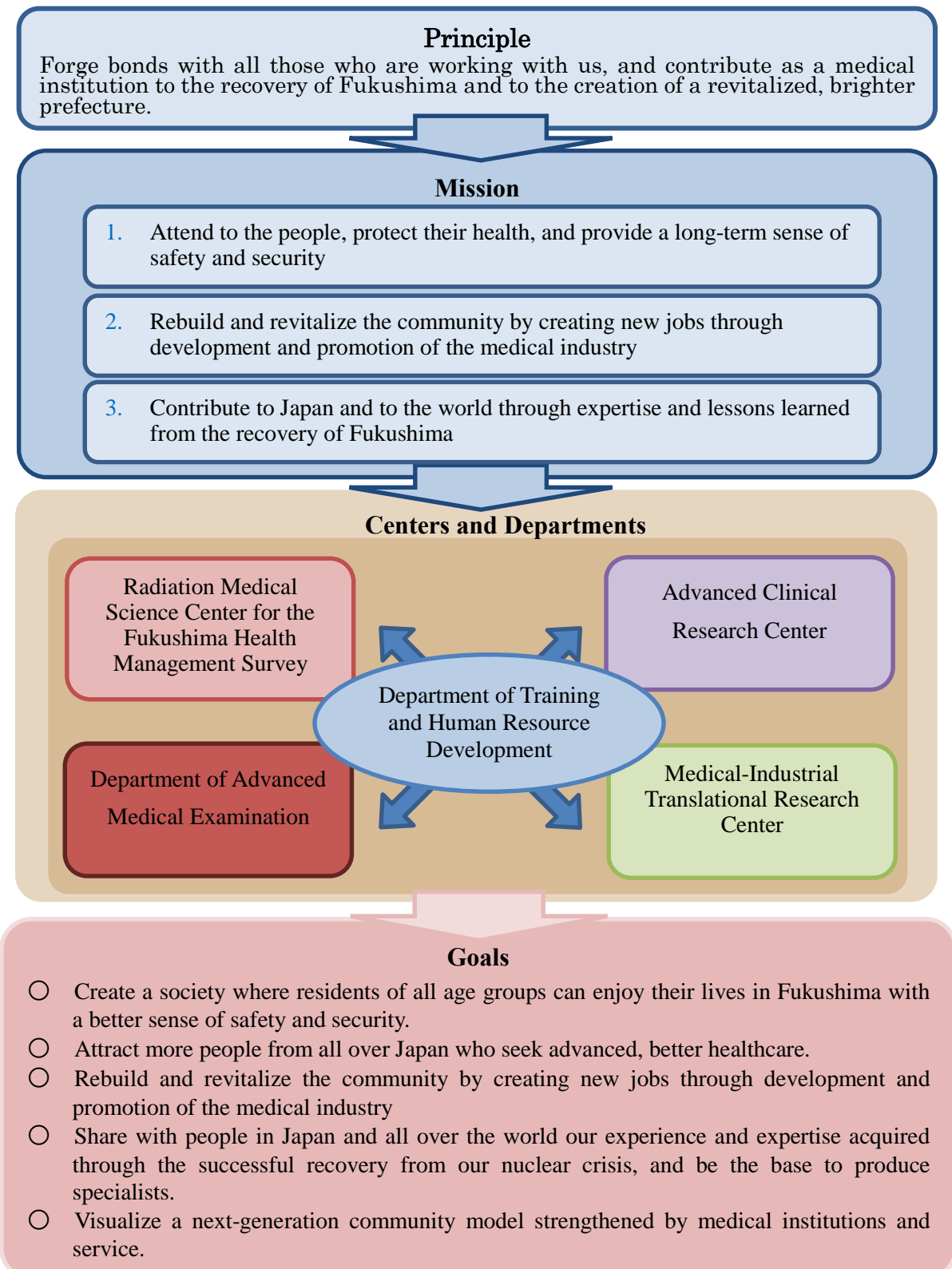
To fulfill the responsibilities we took on after our disaster, we have set up the Fukushima Global Medical Science Center with the help of those both inside and outside Japan who care for Fukushima. Through this center, we will continue the Fukushima Health Management Survey, establish cutting-edge medical facilities and treatment modalities, foster globally-oriented medical professionals, and promote the medical industry to rebuild and revitalize our community.

Fukushima Medical University is determined to attend to the needs of people in Fukushima and protect their health for the years to come. By fulfilling this responsibility, we hope to demonstrate how deeply grateful we are for the generous support extended by people all over the world.

# 1. Principles of Fukushima Global Medical Science Center

We will contribute to the recovery of the community through five centers and departments to provide the people in Fukushima with a sense of safety and security.

- (1) Radiation Medical Science Center for the Fukushima Health Management Survey
- (2) Advanced Clinical Research Center
- (3) Department of Advanced Medical Examination
- (4) Medical-Industrial Translational Research Center
- (5) Department of Training and Human Resource Development



## 2. Responsibility and Measures

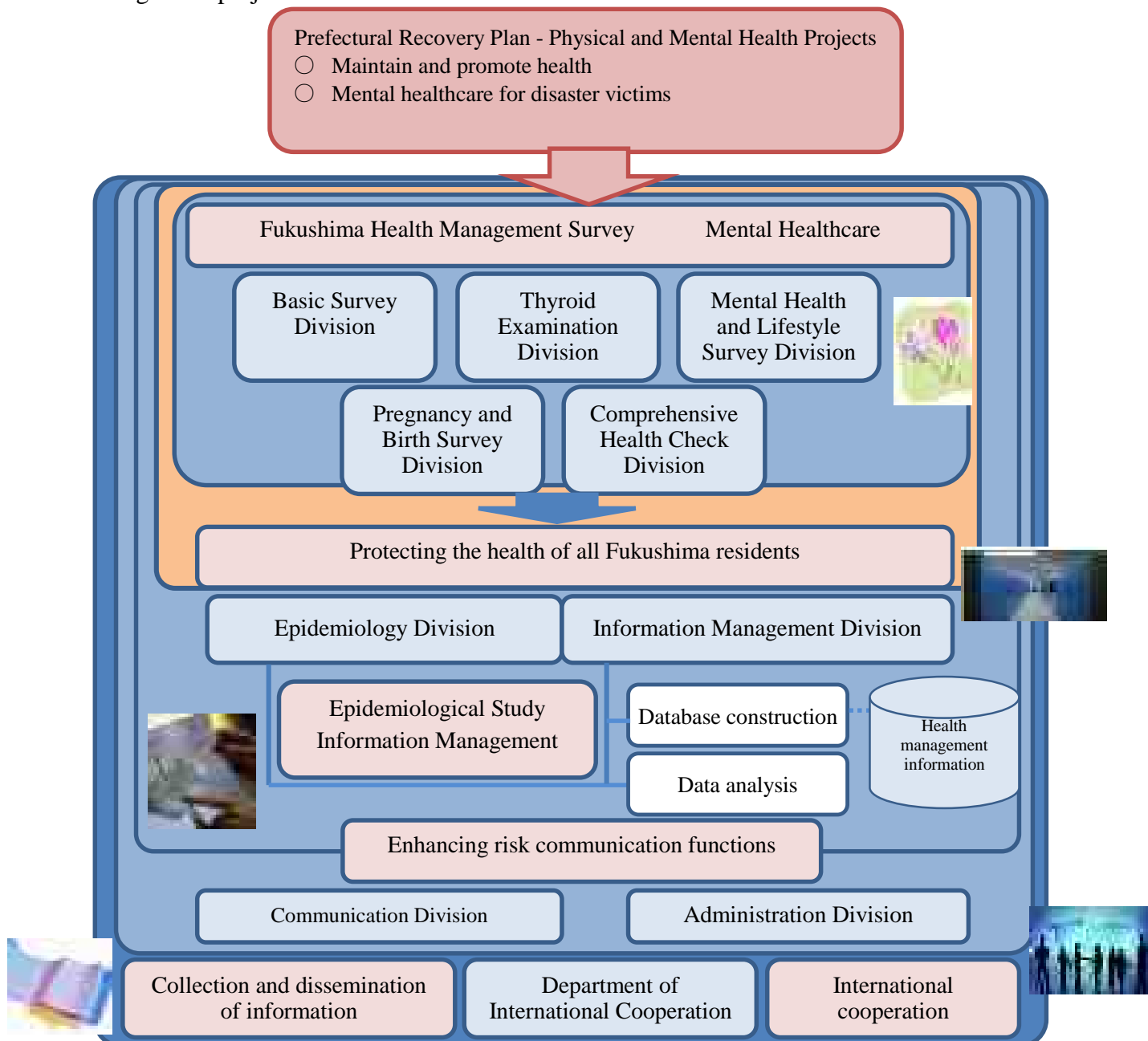
### (1) Radiation Medical Science Center for the Fukushima Health Management Survey

#### ① Responsibility

Protect the health of all people in Fukushima through the Fukushima Health Management Survey and epidemiological studies on radiation and health.

#### ② Measures

- ◆ Implement a long-term health survey for all the prefectural residents and establish facilities related to the project.
- ◆ Implement Basic Survey, Thyroid Ultrasound Examination, Mental Health and Lifestyle Survey, Comprehensive Health Check, and Pregnancy and Birth Survey; establish a base to promote medical and healthcare service projects to protect the health of people in Fukushima.
- ◆ Implement epidemiological studies and analyses on radiation effects, and establish and utilize health management database
- ◆ Collect and disseminate information, and execute measures to be the base of global collaboration to promote advanced research and education
- ◆ Establish an interdisciplinary health risk communication model, and promote sustainable health management projects



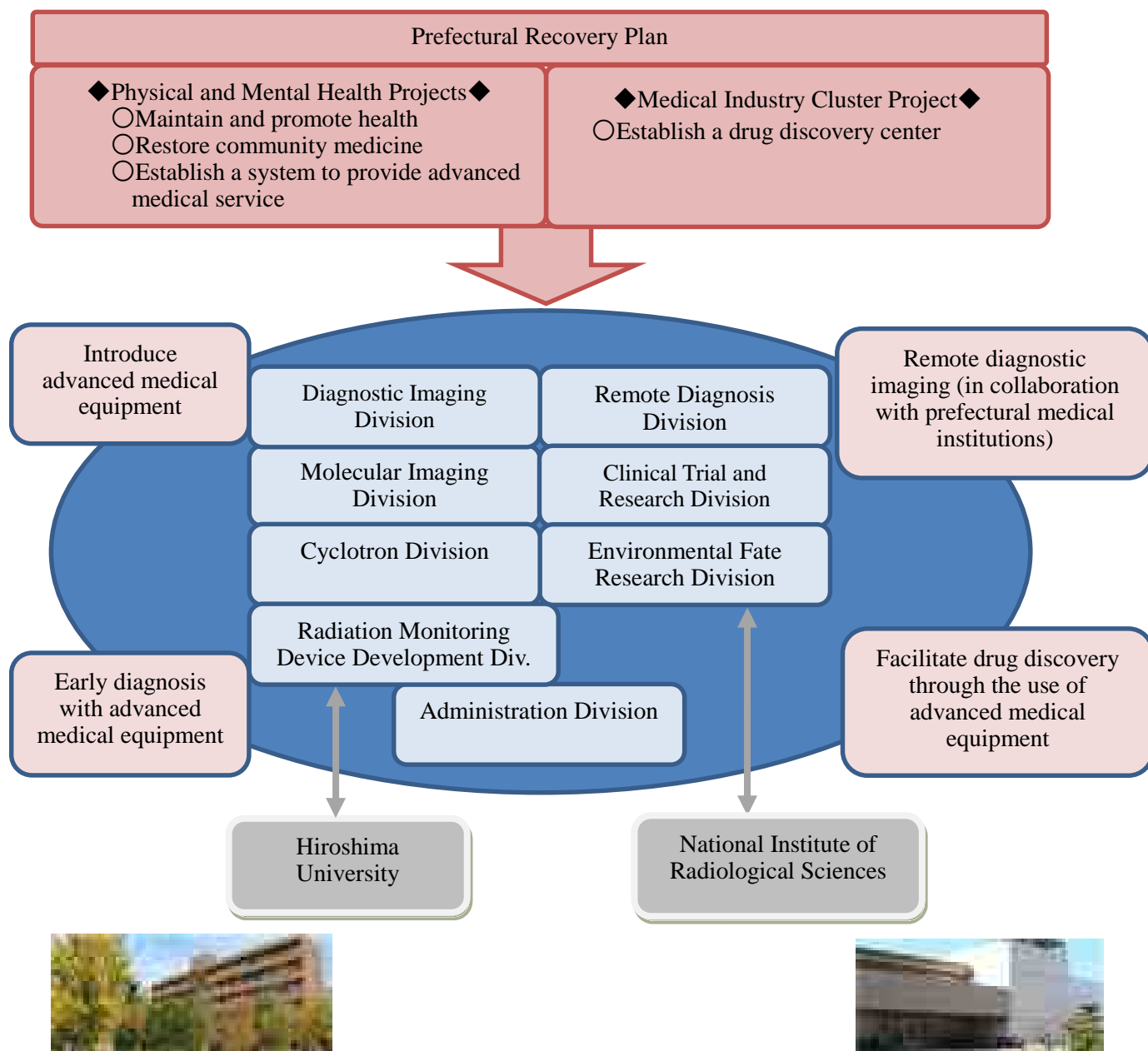
## (2) Advanced Clinical Research Center

### ① Responsibility

Provide early diagnosis of diseases by using advanced medical equipment including diagnostic imaging devices

### ② Measures

- ◆ Provide early diagnoses through the use of molecular imaging technology, advanced medical equipment, etc.
- ◆ Collaborate with other medical institutions by networking remote diagnostic imaging technology
- ◆ Introduce and operate PET-MRI, PET-CT, MicroPET, Syngo.via, etc.
- ◆ Establish cyclotron
- ◆ Implement projects in collaboration with the National Institute of Radiological Sciences (NIRS) and Hiroshima University



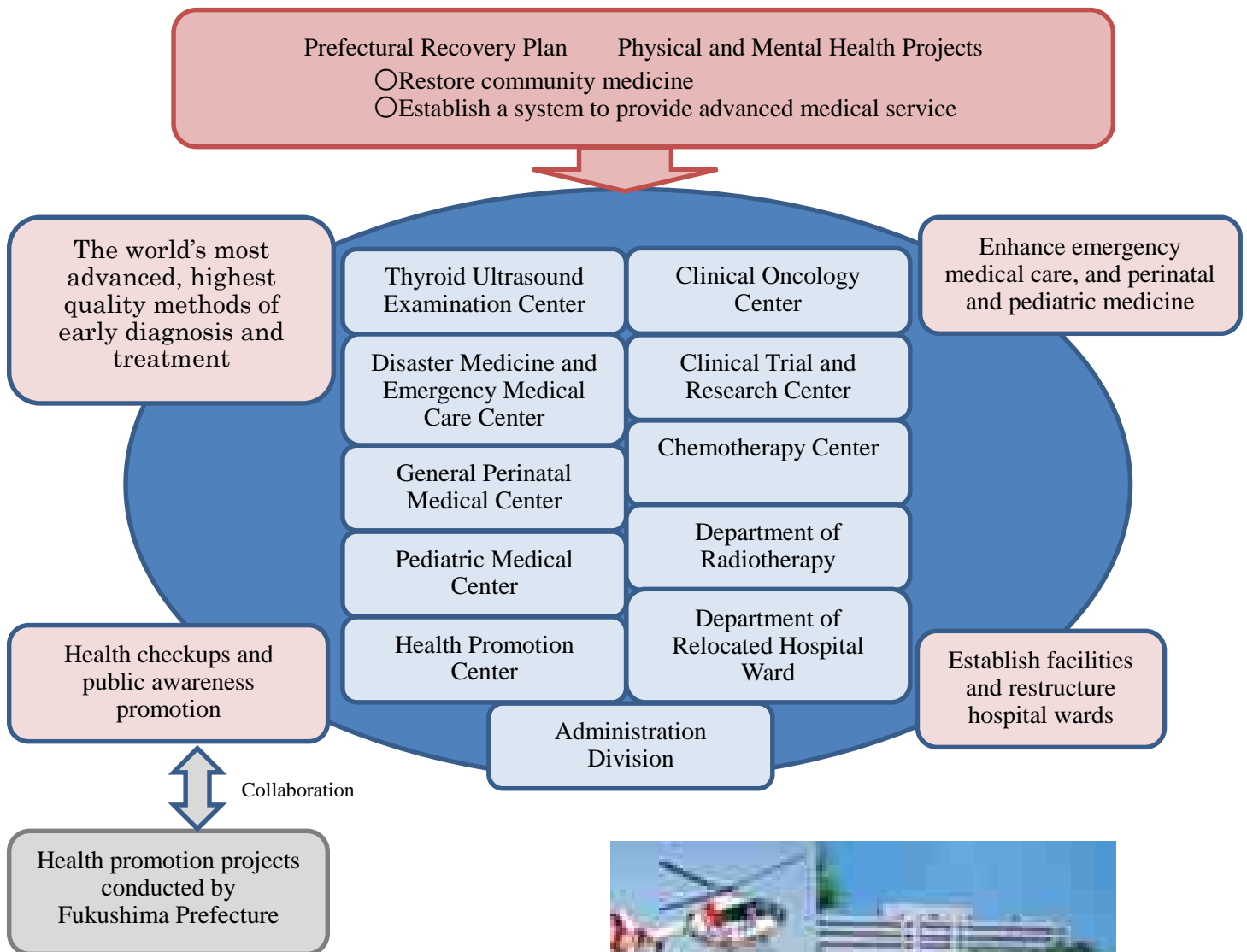
### (3) Department of Advanced Medical Examination

#### ① Responsibility

Provide early diagnosis and treatment of diseases through the use of advanced medical technology and devices

#### ② Measures

- ◆ Establish new hospital wards to provide early treatment of diseases
- ◆ Establish and operate the Thyroid Ultrasound Examination Center
- ◆ Establish and manage the Disaster Medicine and Emergency Medical Care Center, General Healthcare Center for Mother and Child, Pediatric Medical Center, and relocated hospital wards and beds
- ◆ Establish the Health Promotion Center
- ◆ Rearrange hospital wards, e.g. one ward-one disease



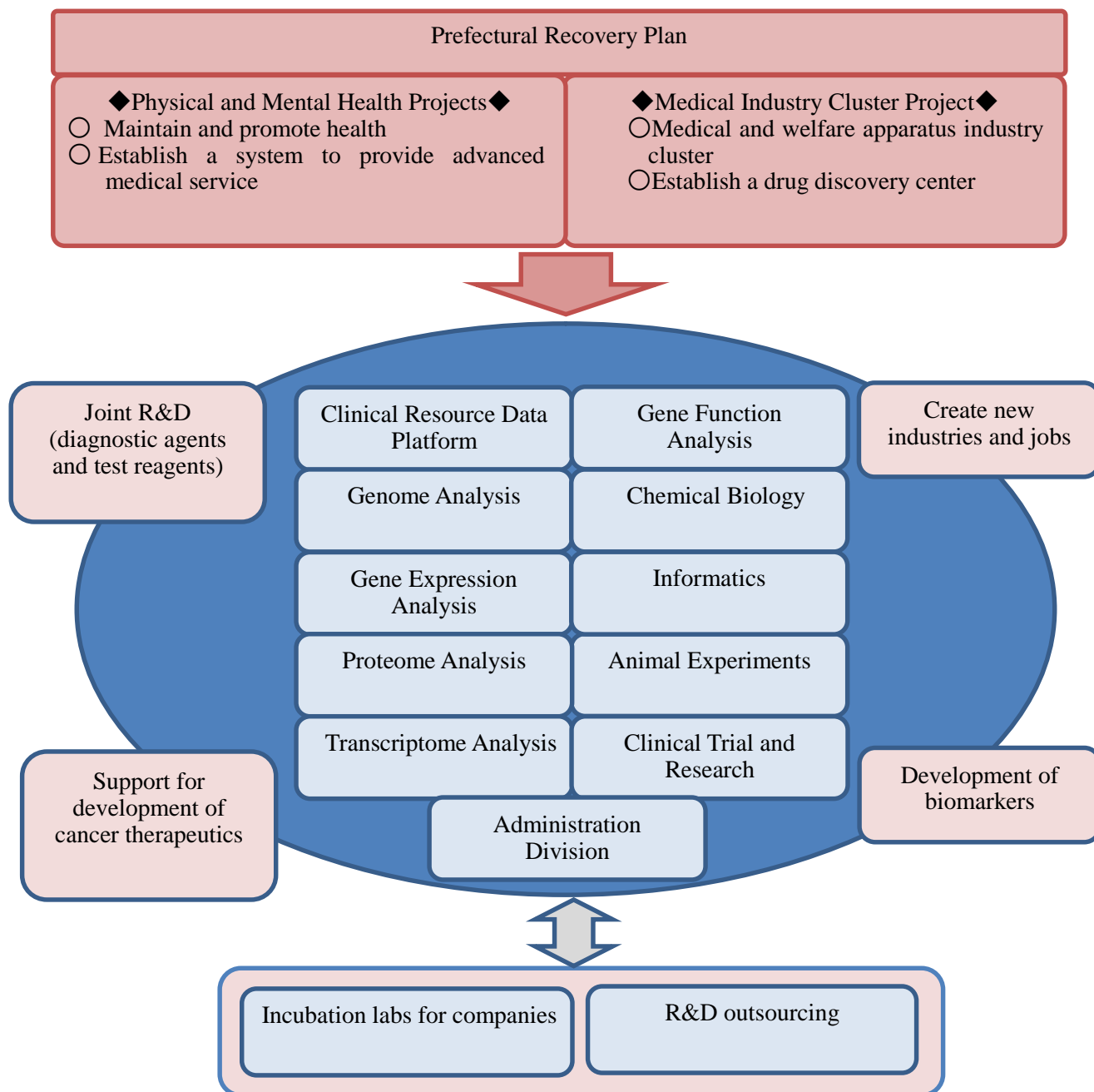
#### (4) Medical-Industrial Translational Research Center

##### ① Responsibility

Link the industrial community with the medical community, and support the development of new medicines, diagnostic agents, test reagents, medical devices, etc.

##### ② Measures

- ◆ Establish a department to facilitate collaboration between the medical community and the industrial community, and support development of biomarkers for diagnosis and treatment of diseases
- ◆ Implement joint research of diagnostic agents, test reagents, medical services, medical devices, etc. for specified diseases
- ◆ Accelerate development of medicine by pharmaceutical companies, create new industries and jobs, and attract industries by coordinating our projects and pharmaceutical companies
- ◆ Maintain and promote the health of prefectural residents through cutting-edge diagnostic technology and treatment of cancer





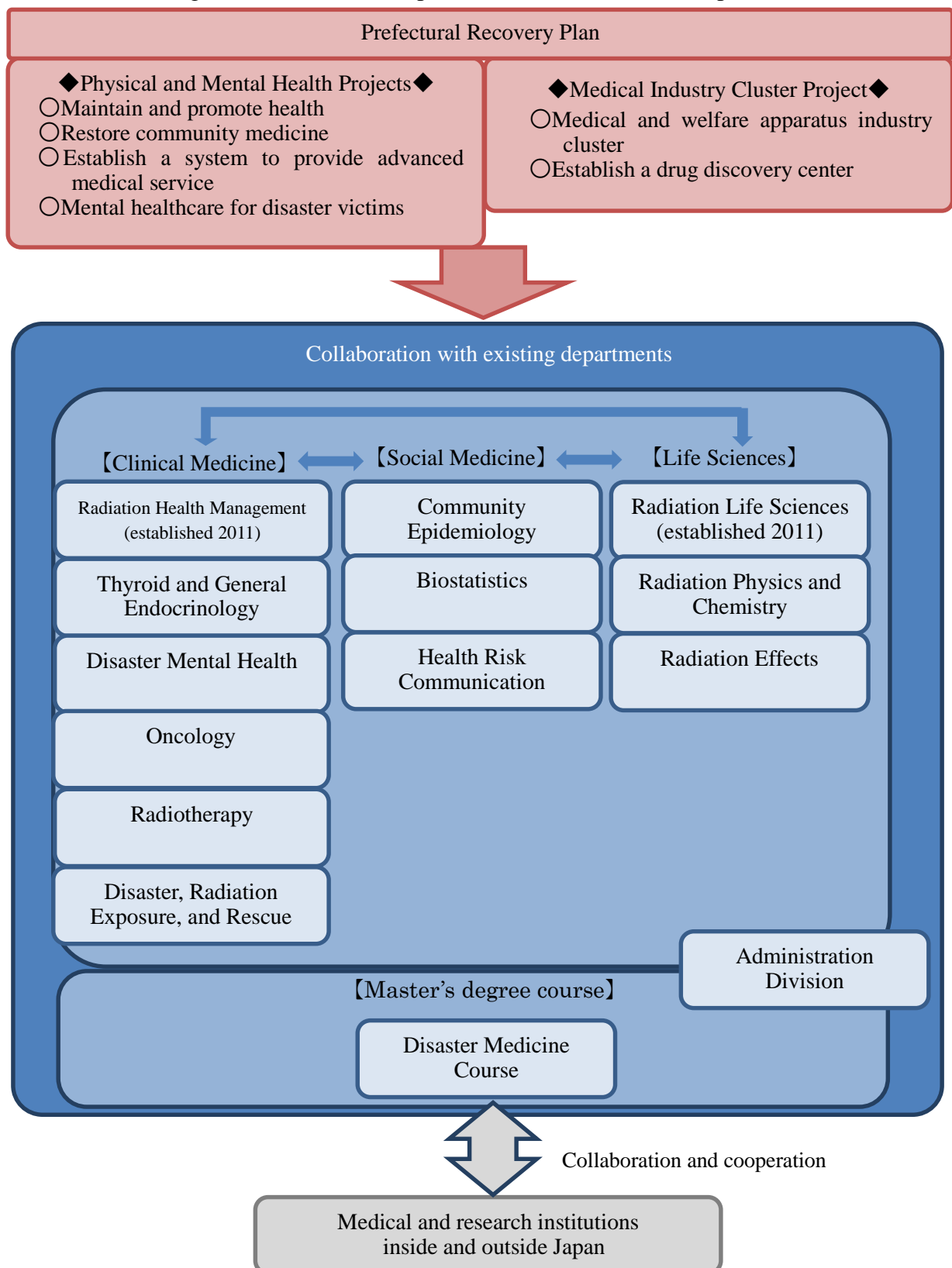
## (5) Department of Training and Human Resource Development

### ① Responsibility

Offer education and training to produce specialists who are motivated to facilitate the Fukushima Health Management Survey, provide the most advanced medical service to the public, and conduct research on advanced medical treatment.

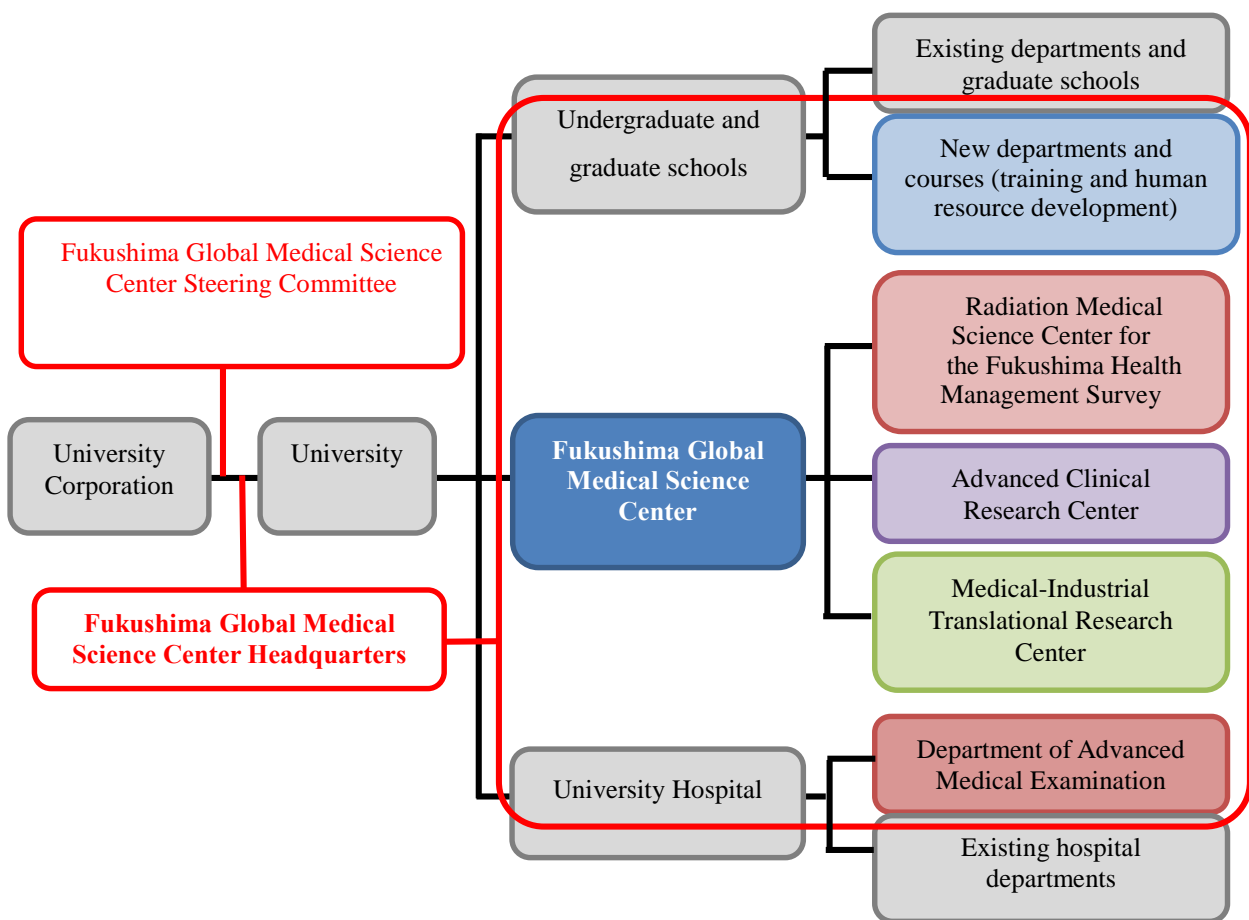
### ② Measures

- ◆ Establish an education system to secure talents both inside and outside Japan for education and research on disaster medicine including emergency medical care for radiation exposure
- ◆ Establish a new graduate school and departments, and maintain and operate related facilities



### 3. Organization Structure

- ① To leverage our function as a university, we will establish the Fukushima Global Medical Science Center on par with the School of Medicine, the School of Nursing, the Graduate School of Medicine, the Graduate School of Nursing, and the university hospital.
- ② We will set up a “Fukushima Global Medical Science Center Steering Committee” within the University. The Committee members will include third-party experts and will make important decisions.
- ③ “Fukushima Global Medical Science Center Headquarters” will include the President, Vice President, and Trustees of the University, and will be responsible for the management of the five centers and departments.





## 4. Budget and Timeline

### (1) Estimated Budget

The total budget needed is estimated to be approximately 30 billion yen.

### (2) Timeline

